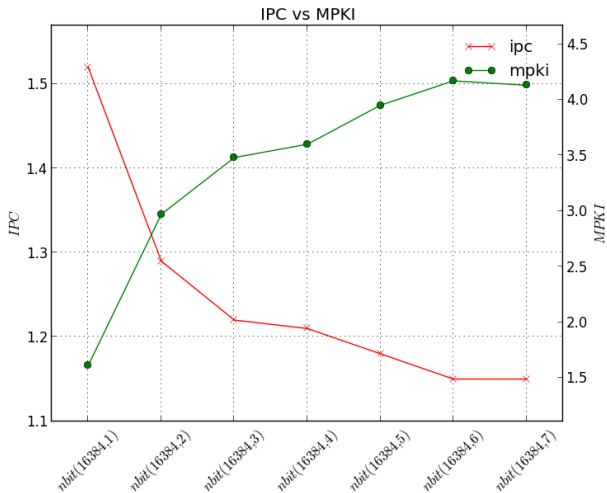


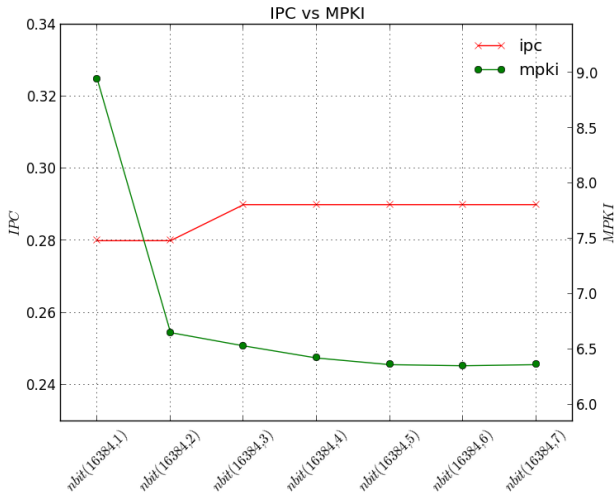
Άσκηση 2

Branch Predictors

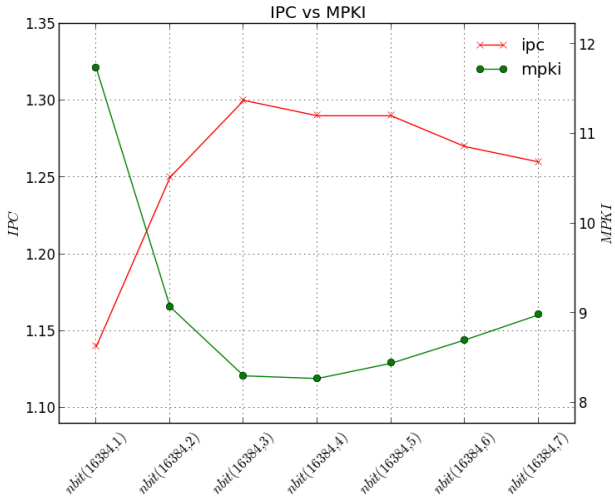
blacksholes



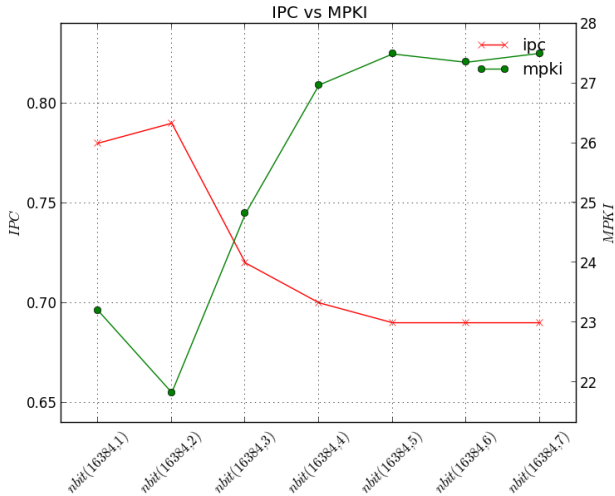
canneal



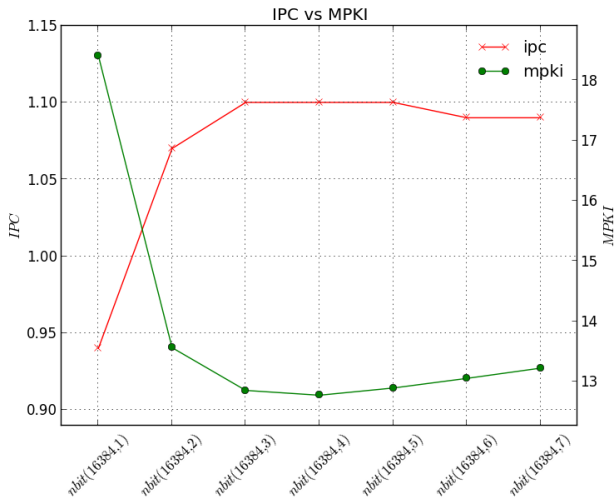
dedup



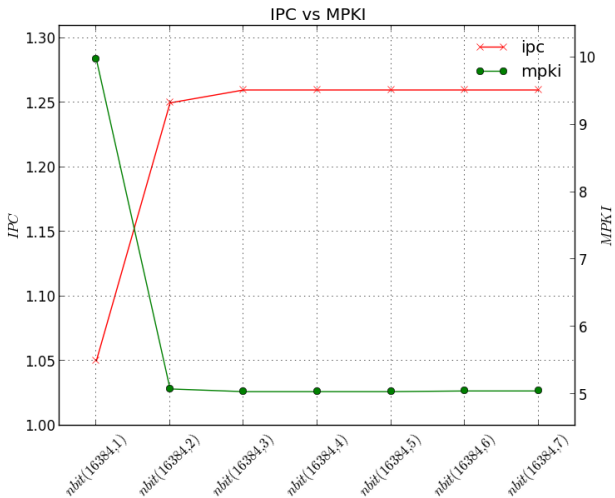
fluidanimate



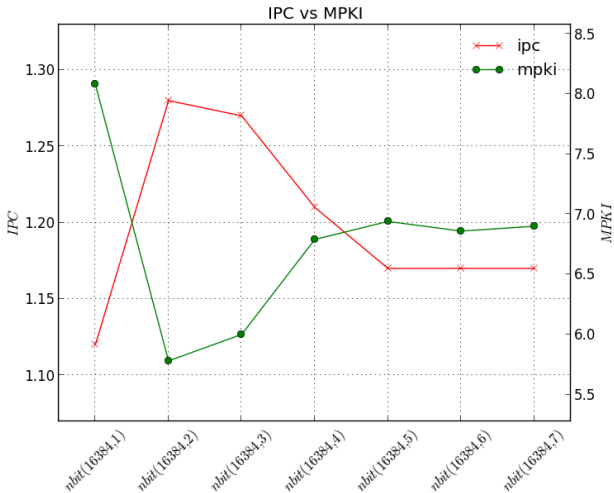
freqmine



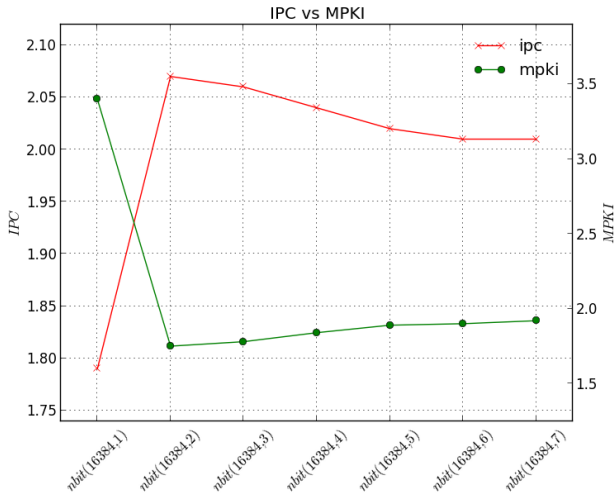
streamcluster



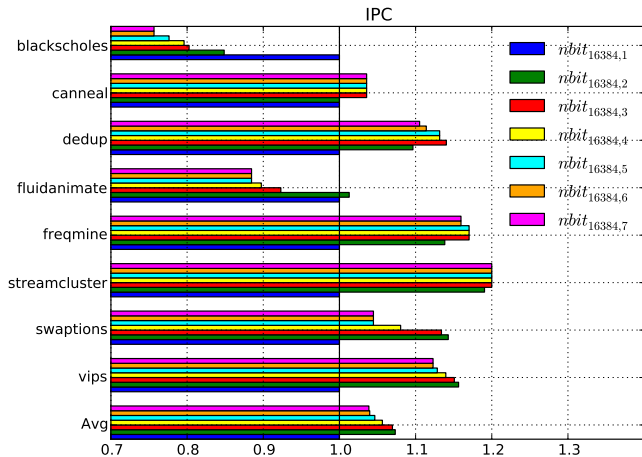
swaptions



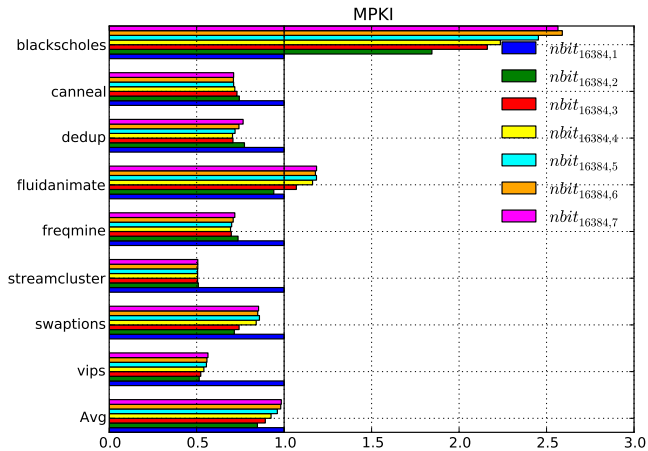
vips



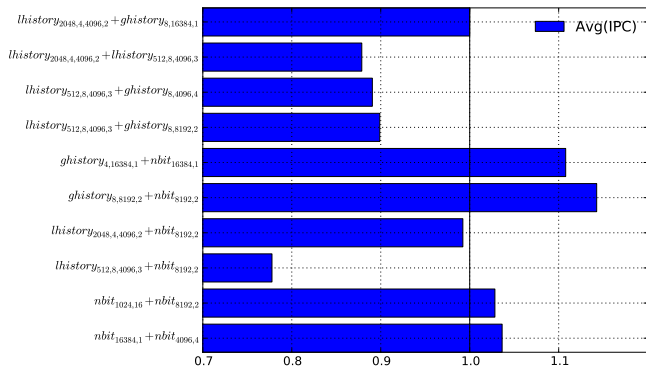
N-bit predictors



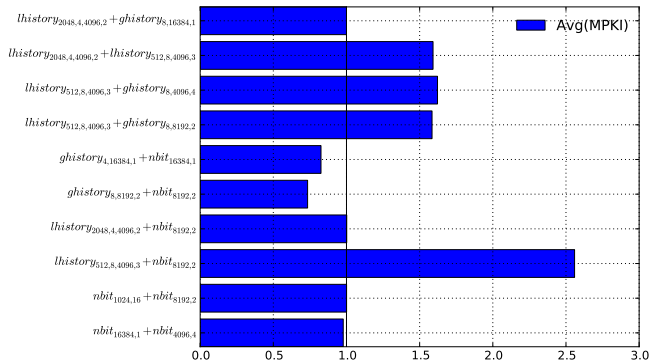
N-bit predictors



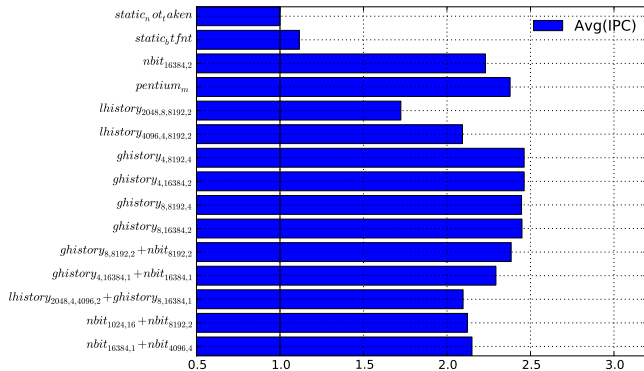
Tournament predictors



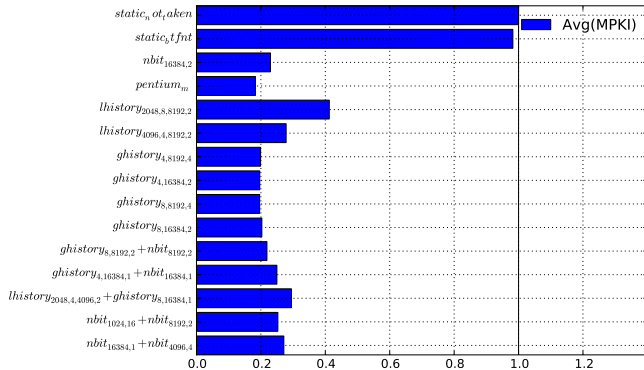
Tournament predictors



All predictors

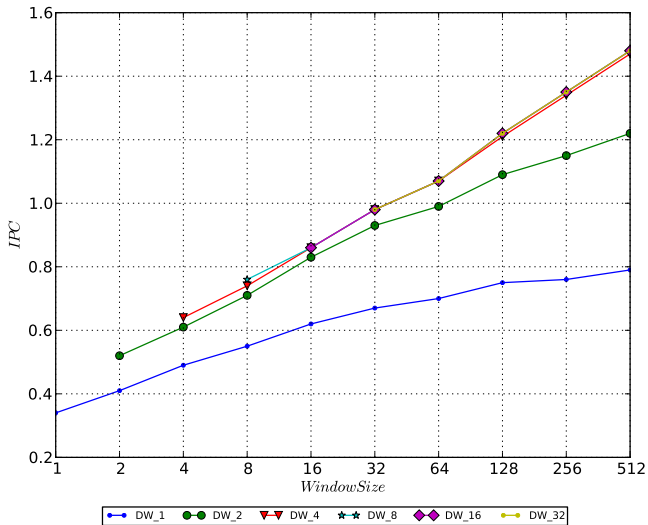


All predictors

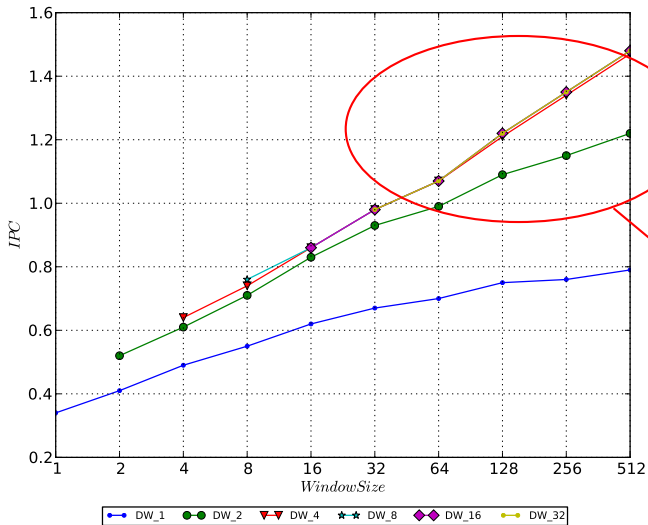


Dispatch width / Window size

blackscholes(test)

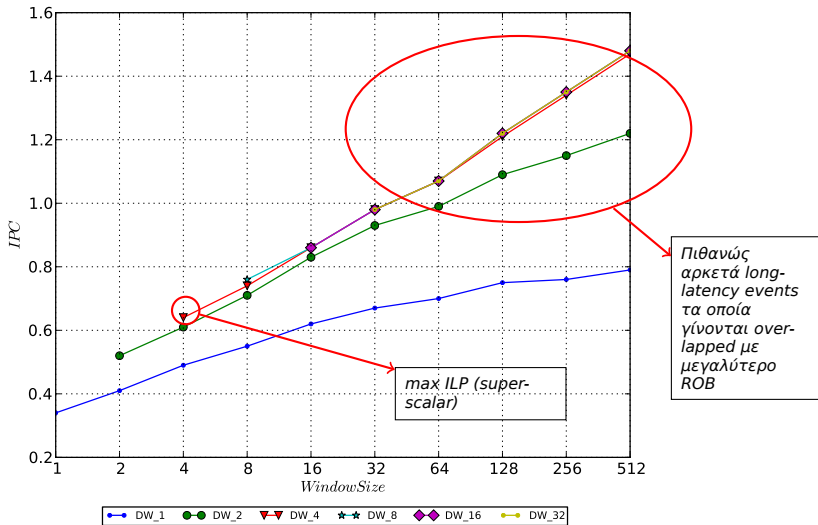


blackscholes(test)

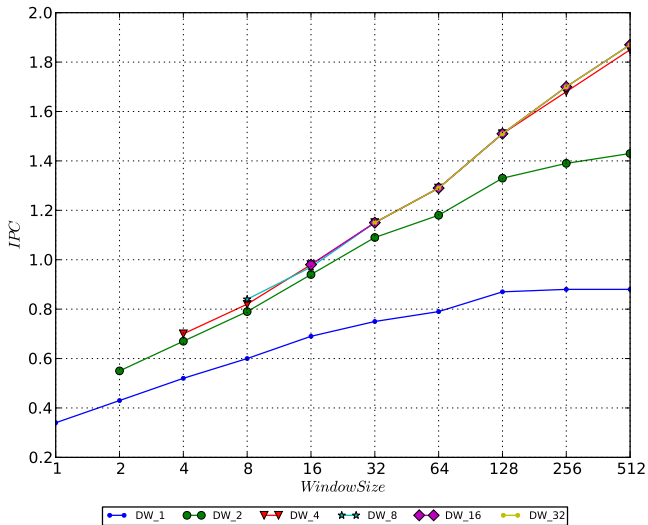


Πιθανώς αρκετά long-latency events τα οποία γίνονται overlapped με μεγαλύτερο ROB

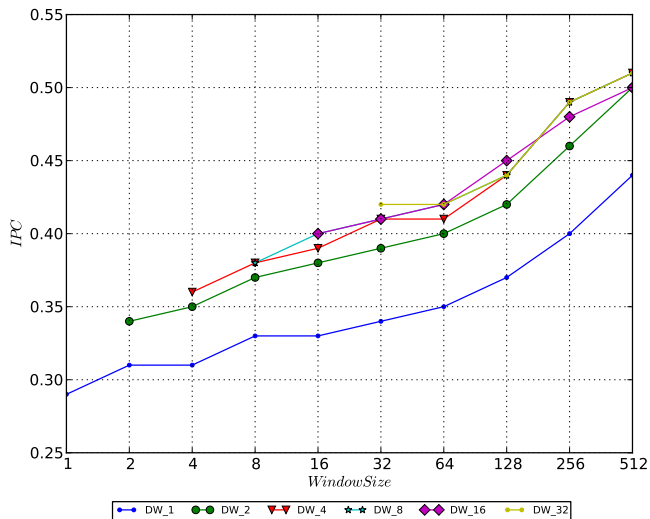
blackscholes(test)



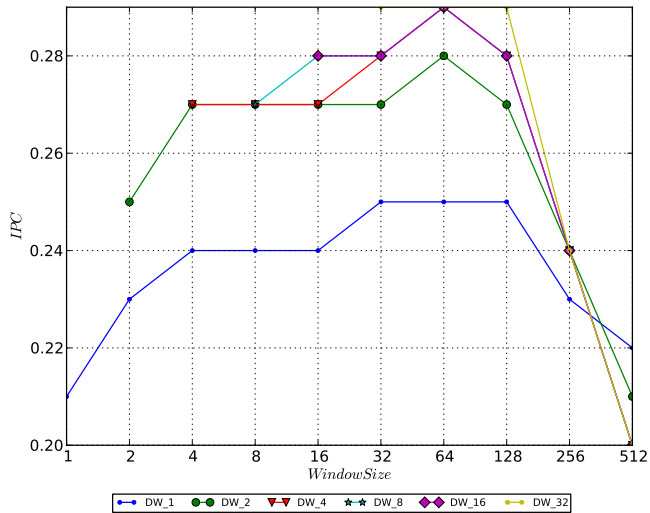
blackscholes(small)



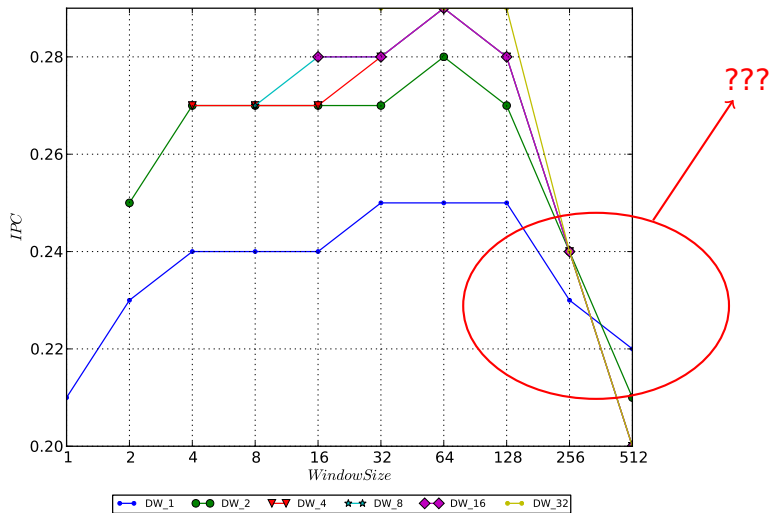
canneal(test)



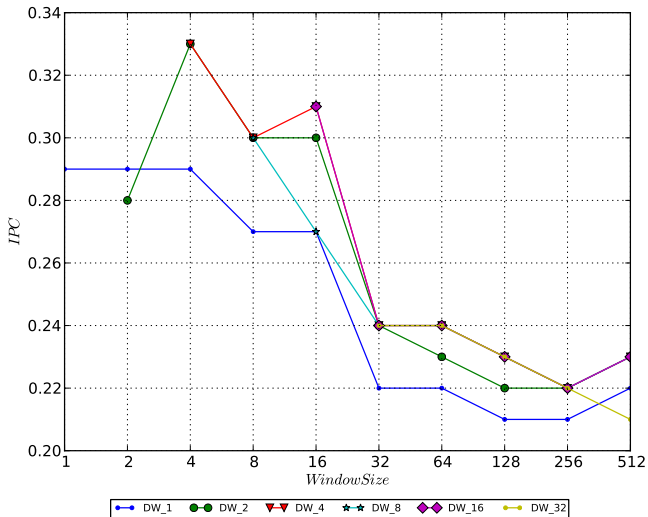
canneal(small)



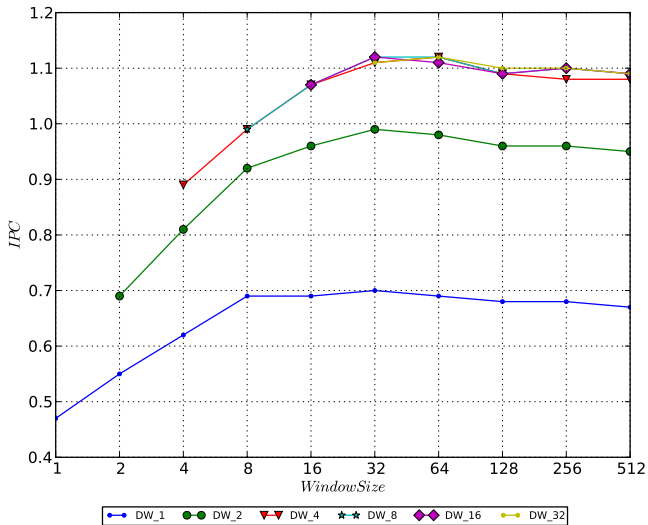
canneal(small)



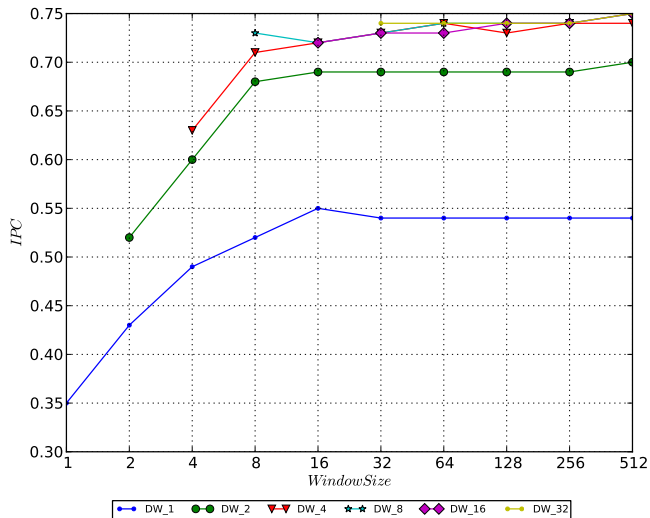
dedup(test)



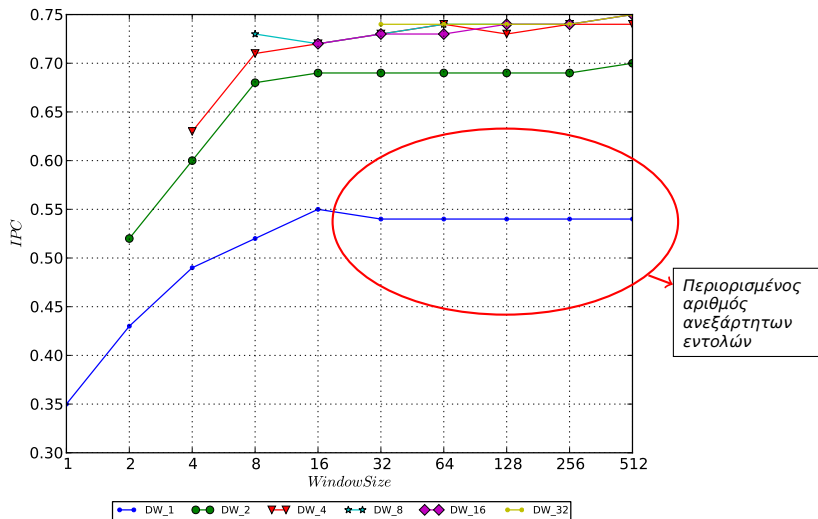
dedup(smaller)



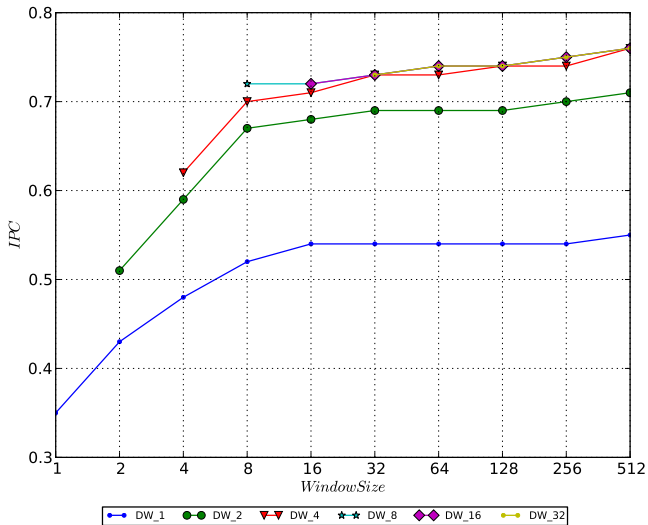
fluidanimate(test)



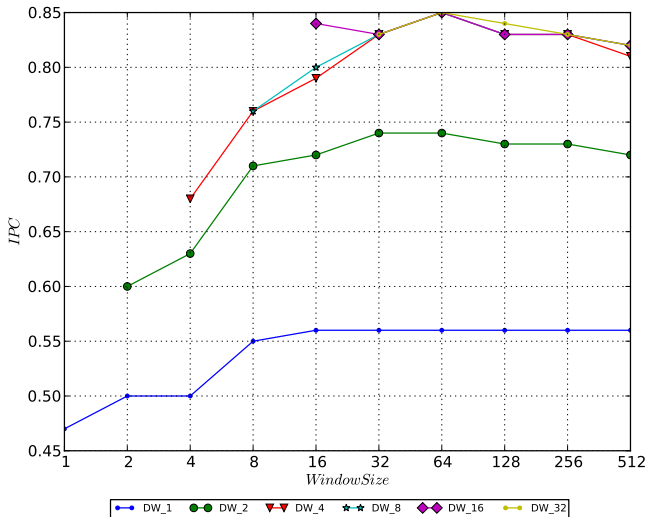
fluidanimate(test)



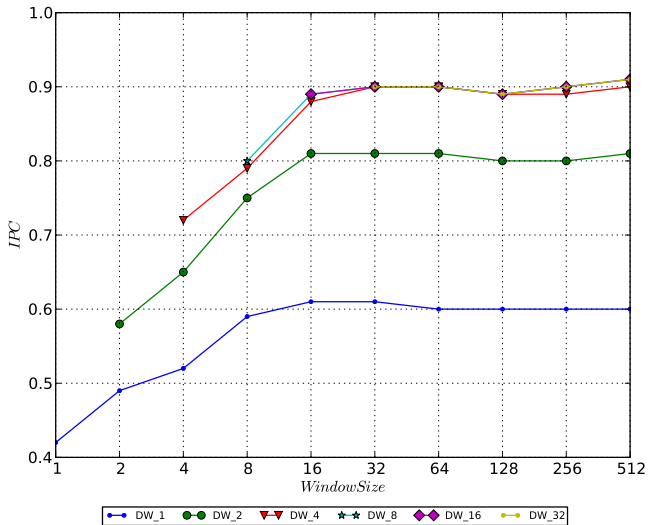
fluidanimate(small)



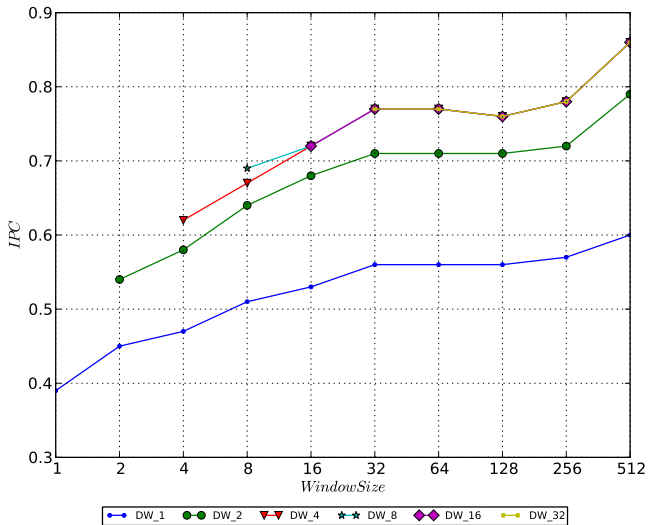
freqmine(test)



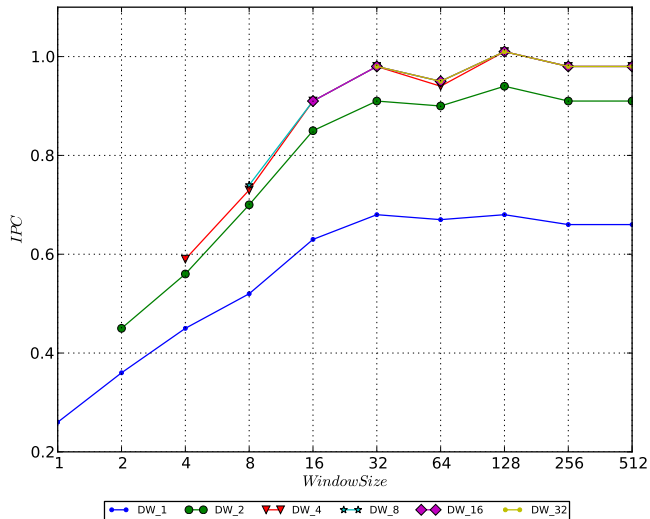
freqmine(small)



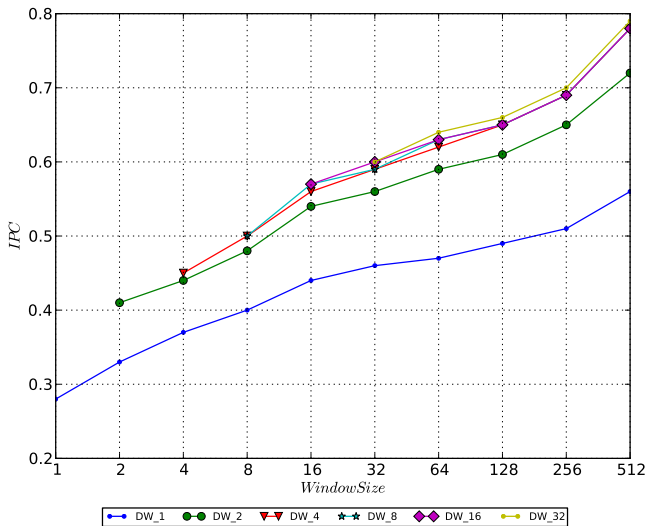
streamcluster(test)



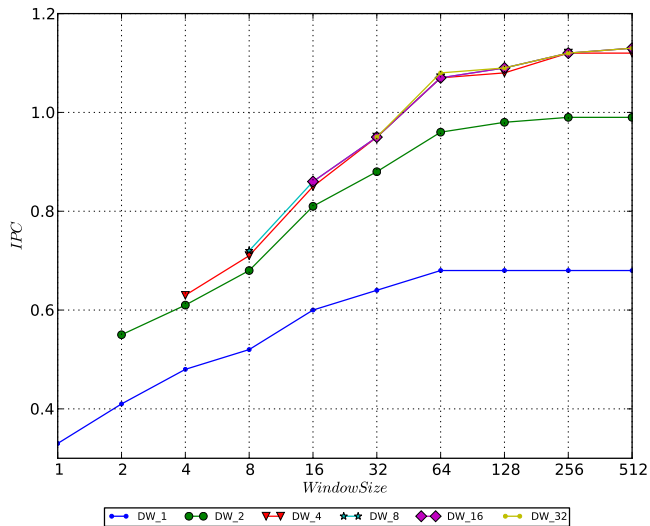
streamcluster(small)



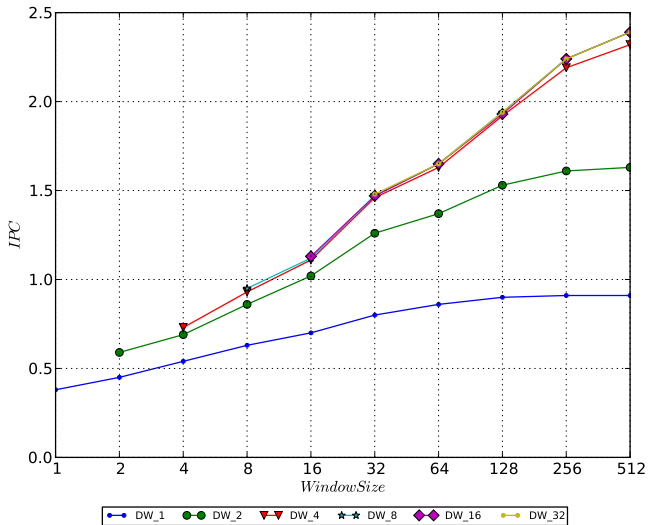
swaptions(test)



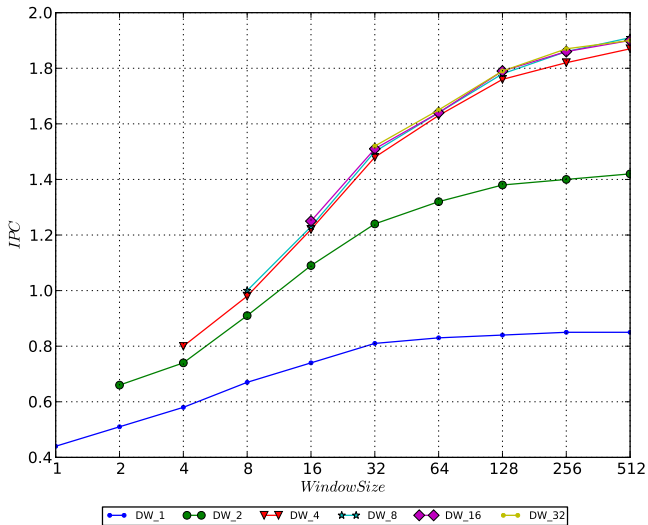
swaptions(small)



vips(test)



vips(small)



Intel processors

Nehalem (2008) -- 45nm

- ▶ Dispatch_width = 4
- ▶ Window_size = 128

Sandy Bridge (2011) -- 32nm

- ▶ Dispatch_width = 4
- ▶ Window_size = 168

Haswell (2013) -- 22nm

- ▶ Dispatch_width = 8
- ▶ Window_size = 192